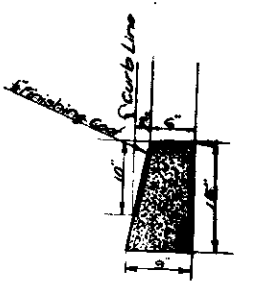


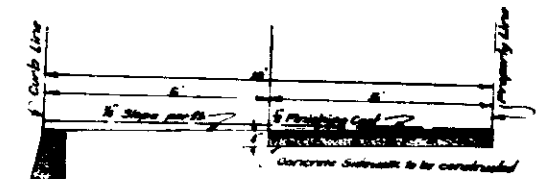
PLAN No 976
FOR CONCRETE SIDEWALK AND CURB IN
GENEVIEVE STREET BETWEEN 27TH STREET
AND 29TH STREET
28TH STREET BETWEEN SIERRA WAY
EAST SIDE OF AND MOUNTAIN VIEW AVENUE
MOUNTAIN VIEW AVENUE BETWEEN 27TH STREET
AND 29TH STREET,
IN THE
CITY OF SAN BERNARDINO CALIFORNIA

OCTOBER 1928.

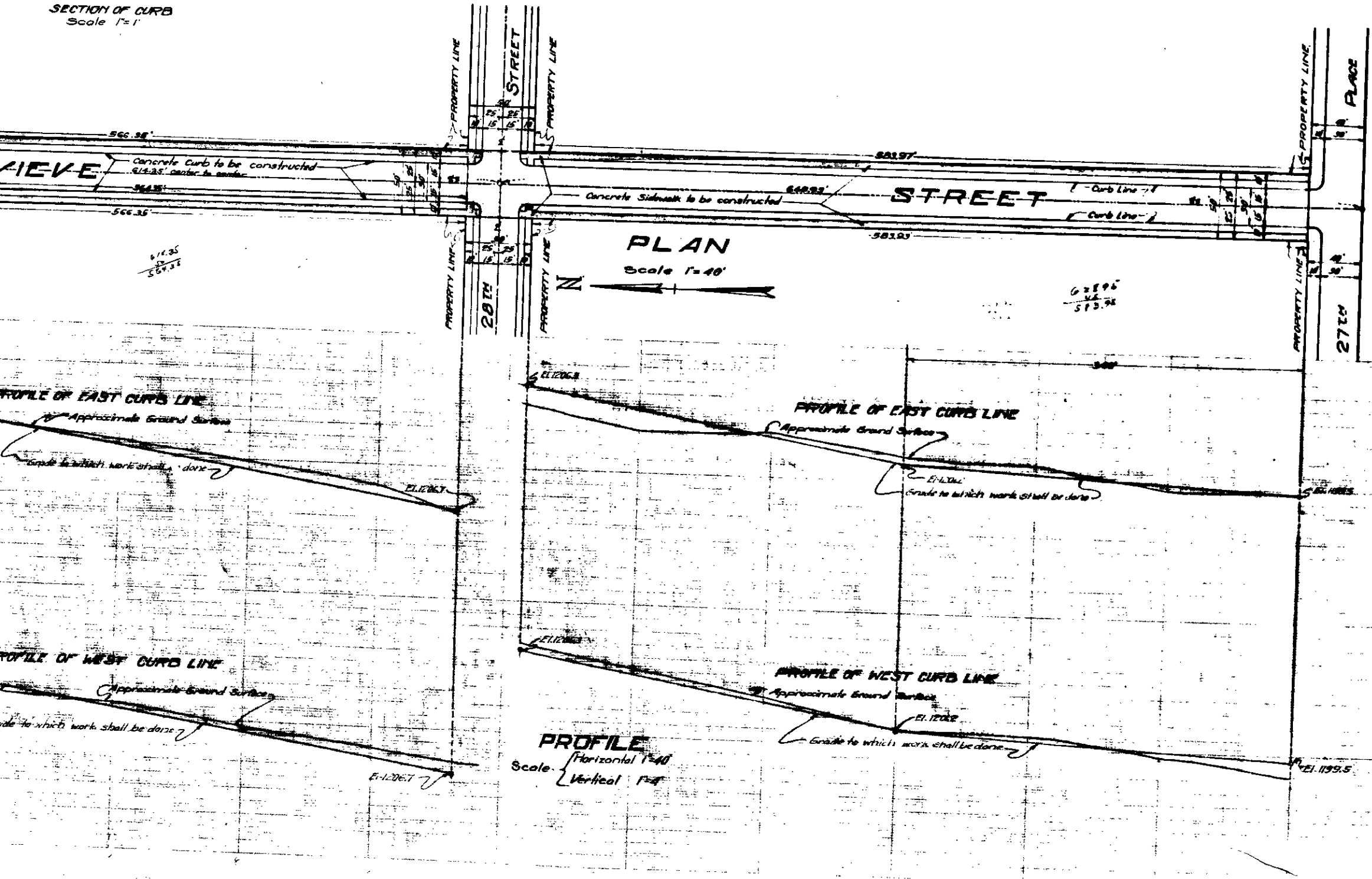
GORDON H. FERTVOLD
 CITY ENGINEER



SECTION OF CURB
 Scale 1"=1



SECTION OF SIDEWALK AND CURB
 Scale 1/2"=1



LEGEND

10' or 10 means feet or feet
 10" or 10 means inch or inches
 El. means Elevation
 118 means Number
 C.L. means Center Line
 Concrete Sidewalk to be constructed shown on Plan thus [Symbol] in Section
 Concrete Curb to be constructed shown on Plan thus [Symbol] in Section



TITLE TO STREETS.

Title to GENEVIEVE STREET by the City of San Bernardino is by Dedication by Thompson Bros Subdivision 1196- as Recorded in Book 129 of Maps Page 63.
 Title to 28TH STREET and MOUNTAIN VIEW AVENUE is by Dedication by the Applicant Tract as Recorded in Book 11 of Maps Page 35 of Records of San Bernardino County California.
 Title to Mountain View Ave. is by Deed Recorded in Book 877 Page 107 of Records of San Bernardino County, California.

GRADE ORDINANCE

Grade of Mountain View Ave established by Ordinance 1191017-Dated SEP-7-1924
 Grade of Genevieve St established by Ordinance 1191230-Dated 3/1/1926
 Grade of 28TH St established by Resolution No. 59-Dated Nov. 14, 1928.

PROFILE LEGEND

Black Line shows Approximate Ground Surface
 Red Line shows GRADE TO WHICH WORK SHALL BE DONE

Note:

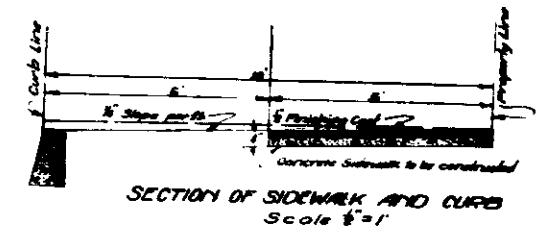
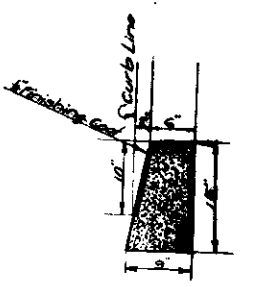
All elevations shown in Red ink are in feet and are above a plane which is 1045.28 ft below the City Bench Mark as established by Ordinance 119303 of the City of San Bernardino, California.

Plan adopted October 8, 1928.

PLAN No 976
FOR CONCRETE SIDEWALK AND CURB IN
GENEVIEVE STREET BETWEEN 27TH STREET
AND 29TH STREET
28TH STREET BETWEEN SIERRA WAY
EAST SIDE OF AND MOUNTAIN VIEW AVENUE
MOUNTAIN VIEW AVENUE BETWEEN 27TH STREET
AND 29TH STREET,
IN THE
CITY OF SAN BERNARDINO CALIFORNIA

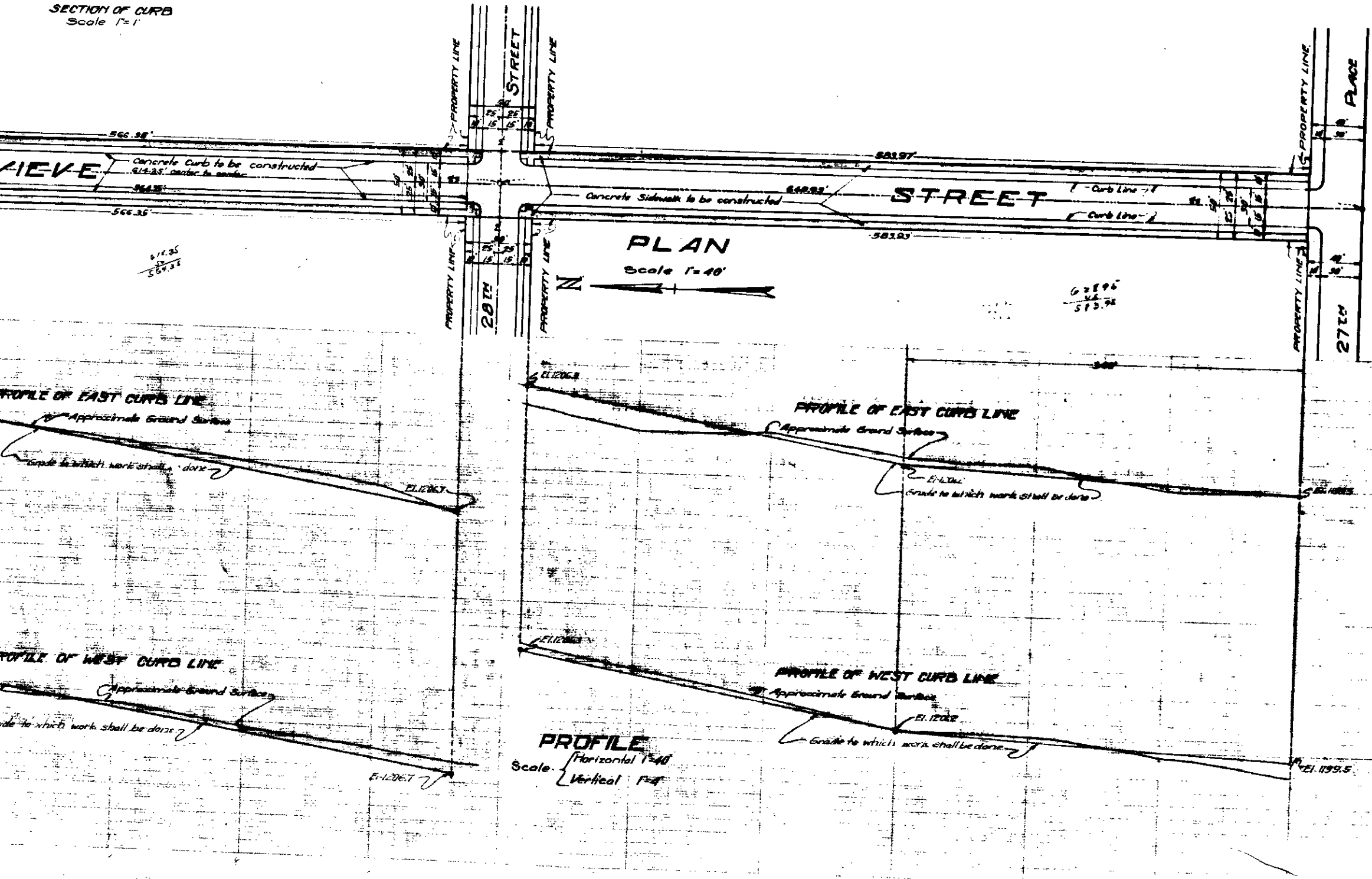
OCTOBER 1928.

GORDON H. FERTVOLD
 CITY ENGINEER



LEGEND

ft or in means feet or inch
 " or in means inch or inches
 El means Elevation
 M.F. means Number
 C.L. means Center Line
 Concrete Sidewalk to be constructed shown on Plan thus [Symbol]
 Concrete Curb to be constructed shown on Plan thus [Symbol]



TITLE TO STREETS.

Title to GENEVIEVE STREET by the City of San Bernardino is by Dedication by Thompson Bros Subdivision No 6- as Recorded in Book 129 of Maps Page 63.
 Title to 28TH STREET and MOUNTAIN VIEW AVENUE is by Dedication by the Applicant Tract as Recorded in Book 11 of Maps Page 35 of Records of San Bernardino County California.
 Title to Mountain View Ave. is by Deed Recorded in Book 877 Page 107 of Records of San Bernardino County, California.

GRADE ORDINANCE

Grade of Mountain View Ave established by Ordinance 1771073 Dated SEP 27 1924.
 Grade of Genevieve St established by Ordinance 1751230 Dated 3/1/1926.
 Grade of 28TH St established by Resolution No. 59 Dated Nov 14 1922.

PROFILE LEGEND

Black Line shows Approximate Ground Surface
 Red Line shows GRADE TO WHICH WORK SHALL BE DONE

Note:

All elevations shown in Red ink are in feet and are above a plane which is 1045.28 ft below the City Bench Mark as established by Ordinance 119303 of the City of San Bernardino, California.

Plan adopted October 8, 1928.